

# ZOOMLION TELESCOPIC BOOM LIFT

## ZT34J

Comply with CE/ANSI/CSA Standard



## HIGHLIGHTS

- ▶ Perform dual capacity design, up to 300/454kg (660/1000lb)
- ▶ Rough terrain chassis features swing axle function, easy to achieve 45% gradeability
- ▶ Creative outrigger telescopic method; strong field applicability, low telescopic failure rate, and effective prevention of abnormal tire wear (option)
- ▶ Smooth & stable boom extension, the telescopic efficiency of the boom is increased by 30% compared with that of the double-cylinder telescopic boom
- ▶ Better work envelop performance, 10% larger than competitor



## FEATURES

### Standard Features

|                            |
|----------------------------|
| Horn                       |
| Proportional control       |
| All motion alarm           |
| Flashing beacon            |
| Self-closing entry gate    |
| Emergency descent system   |
| Emergency stop button      |
| Auto-leveling system       |
| On-board diagnostic system |
| Tilt protection system     |
| Oscillating axle           |
| Load sensing system        |
| 4.3' Led display           |
| Swing-out engine tray      |

### Accessories & Options

- ▶ Platform work light
- ▶ Anti-collision device
- ▶ AC power to platform
- ▶ Outrigger in-situ telescopic function



## ACCESS WITH ZOOMLION GREEN

Phone: 0086(731)-88353680 0086(731)-88250971  
E-mail: awm@zoomlion.com

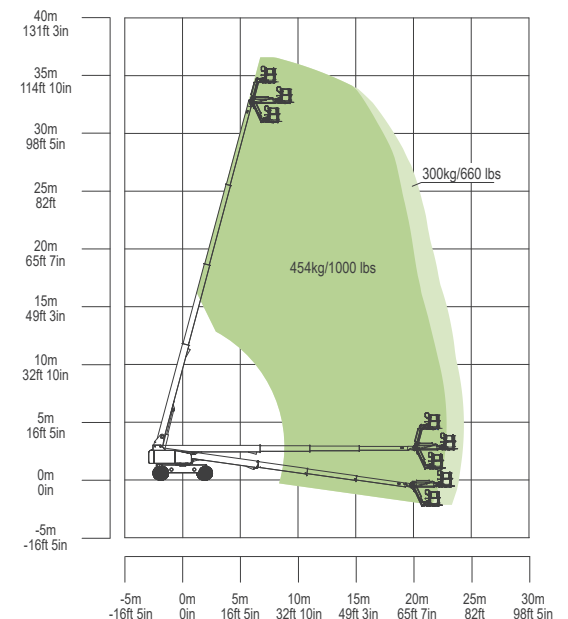
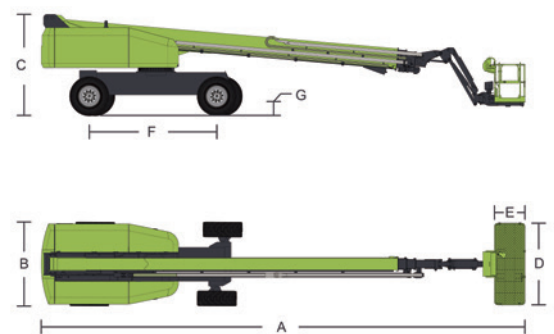
Add: ZOOMLION Wangcheng Industrial Park, Tengfei Road 997, Changsha, Hunan, China  
Web: www.en.zoomlion.com

# MAIN SPECS OF TELESCOPIC BOOM LIFT

## ZT34J

Comply with CE/ANSI/CSA Standard

| Model                                       | ZT34J                          |            |
|---|--------------------------------|------------|
|   | Imperial                       | Metric     |
| Size  |                                |            |
| Work Height                                 | 118ft 1in                      | 36m        |
| Platform Height                             | 111ft 7in                      | 34m        |
| Horizontal Outreach                         | 79ft 5in                       | 24.2m      |
| A - Stowed Length                           | 44ft 3in                       | 13.50m     |
| B - Stowed Width                            | 8ft 2in                        | 2.49m      |
| C - Stowed Height                           | 9ft 10in                       | 3m         |
| D - Platform Length                         | 8ft                            | 2.44m      |
| E - Platform Width                          | 3ft                            | 0.91m      |
| F - Wheelbase                               | 12ft 6in                       | 3.81m      |
| Tread                                       | 8ft 2in/12ft 8in               | 2.49/3.87m |
| G - Ground Clearance                        | 1ft 4in                        | 0.41m      |
| Performance                                 |                                |            |
| Platform Capacity (Unrestricted/Restricted) | 660/1000lb                     | 300/454kg  |
| Drive Speed (Stowed)                        | 3.1mph                         | 5km/h      |
| Gradeability                                | 45% (24°)                      |            |
| Turning Radius (Inside)                     | 10ft 10in/25ft 3in             | 3.3/7.7m   |
| Turning Radius (Outside)                    | 26ft 11in/35ft 5in             | 8.2/10.8m  |
| Turntable Swing                             | 360° continuous                |            |
| Platform Rotation                           | ±90°                           |            |
| Tail Swing                                  | 3ft 11in                       | 1.2m       |
| Jib (Range of Articulation)                 | 130° (-55°~75°)                |            |
| Max. Wind Speed                             | 28mph                          | 12.5m/s    |
| Power                                       |                                |            |
| Engine                                      | Cummins QSF 2.8 54kW/2400rpm   |            |
| Fuel Tank Capacity                          | 52.8 (us gal)                  | 200L       |
| Control Voltage                             | 12V DC                         |            |
| Hydraulic Tank Capacity                     | 66 (us gal)                    | 250L       |
| Drive Mode                                  | 4WD                            |            |
| Steering Mode                               | Four wheels/Front wheel/Crab   |            |
| Tire  |                                |            |
| Type  | IN445/50D710 Foam-filled Tires |            |
| Weight                                      |                                |            |
| Gross                                       | 42549lb                        | 19300kg    |



Range of Motion ZT34J